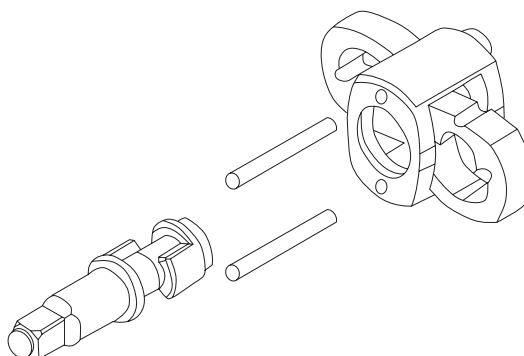




PRODUCT FEATURES

Designed for professional use. Compact size and low weight of wrench. Impact mechanism with a double hammer clutch. Left / right direction switch. 3 tightening torque positions and 3 loosening ones. Downward air inlet in the handle. Body made from aluminum, handle covered with rubber. Universal quick coupling 1/4\".



1/2"	max 678 Nm	6,3 bar	135 l/min	TWIN HAMMER	(R/L)	1,42kg LIGHT WEIGHT	108mm COMPACT SIZE	C	CE
------	------------------	------------	--------------	----------------	-------	---------------------------	--------------------------	---	----

CODE	SQUARE	MAX. TORQUE [NM]	
66471	1/2"	678	10